

PINETREE

MARINA RESORT



PINETREE

MARINA RESORT

WE BELIEVE THAT
EVERY LEGACY STARTS
WITH AN IDEA.



A VISION

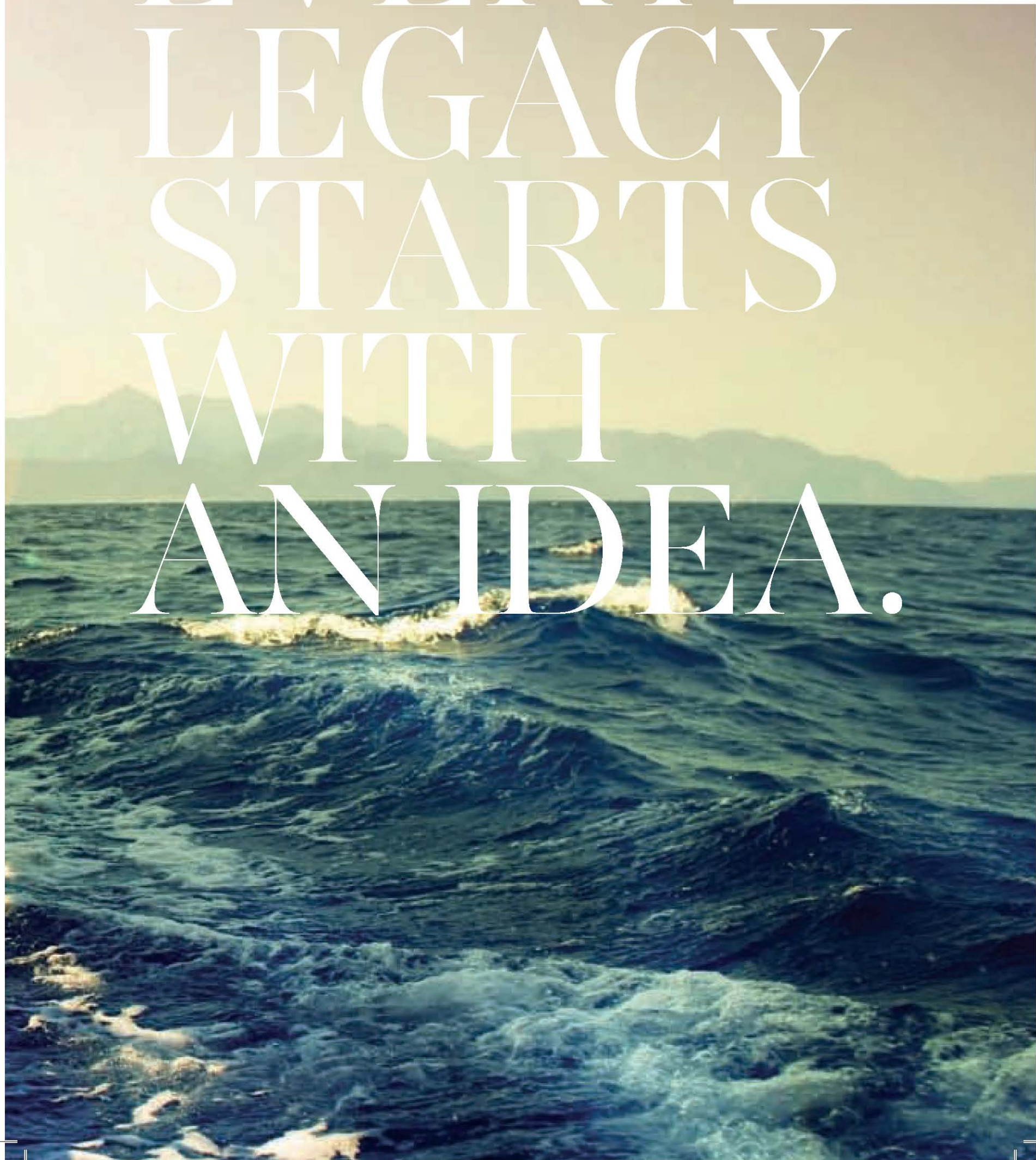
The future belongs to those who see
possibilities before they become obvious.

A close-up, low-angle shot of a sailboat's deck and mast, looking out over the ocean at sunset. The sun is low on the horizon, creating a warm, golden glow and long, dark shadows. The water is a deep blue with white foam from the boat's wake. The mast and rigging are silhouetted against the bright sky.

VISION | CONCEPT | DESIGN

Pinetree Marina Resort is a vision of an iconic landmark where generations are proud to be a piece of its story. A culture evolved from a society that exudes high civic conscience. A sanctuary of peace, with the perfect balance of water and green surroundings. A monument that is known as the Pinetree Marina Resort.

EVERY
LEGACY
STARTS
WITH
AN IDEA.





The Pinetree Marina Resort comprises of a residential and a hotel tower that exude luxury and comfort. Staying true to its waterfront and nautical lifestyle concept, it is designed to capture the sights and emotions of a sailboat moving forward, parting the sea waves from a tropical paradise.

Each unit is designed to capture either the full view of the harbour or its surroundings. With plenty of natural light and innovative designs, each unit is truly a work of art for the discerning few. The curved lines of these iconic towers lend a commanding yet soft feel to the overall look. Fine dining restaurants, fashion and lifestyle boutiques, International schools and choice universities within close proximity compliment this balance lifestyle.



The sweeping lines of the towers overlook the harbour with a commanding view. Inspired by the splendour of seascape and nautical forms, the towers incorporate and embody these elements to form an architecture with unparalleled beauty and dignified confidence.

The fluid curve
of the sail
caressed by the
wind is an integral
design imagery
and is expressed
in the form of
the twin towers.







Subtle curves tapering at the top of the iconic
tower resonates beauty, art and perfection.
The signage will beckon like a lighthouse
guiding her ships to a safe sanctuary.



: A VIEW BEYOND THE SEA

THE ART

The fluid curve of the sail caressed by the wind is an integral part of the design imagery. The soft flow and dynamic curves of the sail is infused into its design and perfected into an art form to create a unique home that sets a standard apart from the rest.

The distinctive vertical walls of the East façade of both the hotel and apartment towers reflect the strength of the mast and the softness of the sails as the boat catch the wind to set sail.

The gentle curved profile of the façade accentuates the organic qualities of the design. This expression is extended to the roof of both towers.

The nautical theme extends to the design of the podium, and is incorporated into the details of the entrance, main lobby, the internal concourse, and the Waterside Boulevard beyond. A park featuring nautical elements with generous water features completes the pictures.

THE ART

— A SWEEPING CURVE THAT DEFINES THE SKYLINE —



With the vast skyline in the milieu, the towers take centre stage, draped in a signature feature wall of subtle waves upwards and crowned with a sweeping curved roofline. Beyond, a picture postcard view beckons. In the morning, the towers mirror a pair of sails on a ship with its gears set in motion. When evening comes, the towers illuminate the Straits of Johor, like a jeweled tiara.

ALL GREAT
ARCHITECTURE
IS THE DESIGN
OF SPACE THAT
CONTAINS,
CUDDLES,
EXALTS, OR
STIMULATES
ALL SENSES.



In keeping with the vast open space of the marina and beyond, the interiors of the apartment units are spacious and airy. Simple lines and geometric shapes are adopted with the pre-dominant colour being white and fresh warm brown of the timber flooring providing a contrast.

The interiors of the apartment units are specifically designed with a spacious and airy feel, with the choice of overlooking views of the harbour, greenery or glittery cityscapes. A minimalist approach with linear lines and geometric shapes are adopted with white as the primary colour dominates each exclusive residential unit, giving it a fresh, modern, spacious and luxurious feel. Natural and rich brown timber tones are used for flooring and accents to provide contrast to complete a tropical beach house feel.

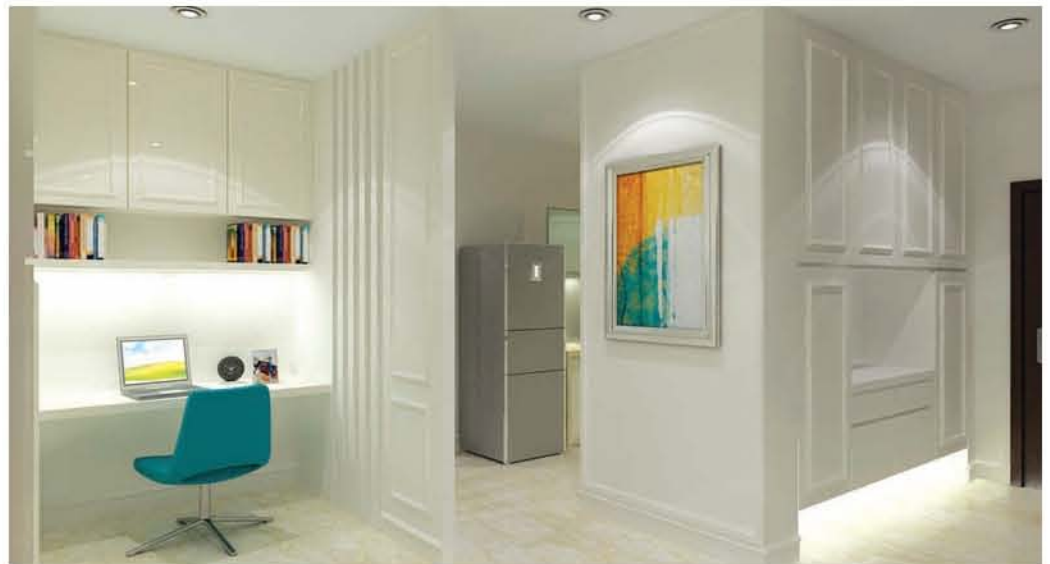








A space is like a blank canvas to an artist, waiting to be turned into an exquisite piece of art.



A SUCCESSFUL
SPACE IS A
SPACE THAT
INTERACTS
AND BALANCES
ONE ANOTHER.





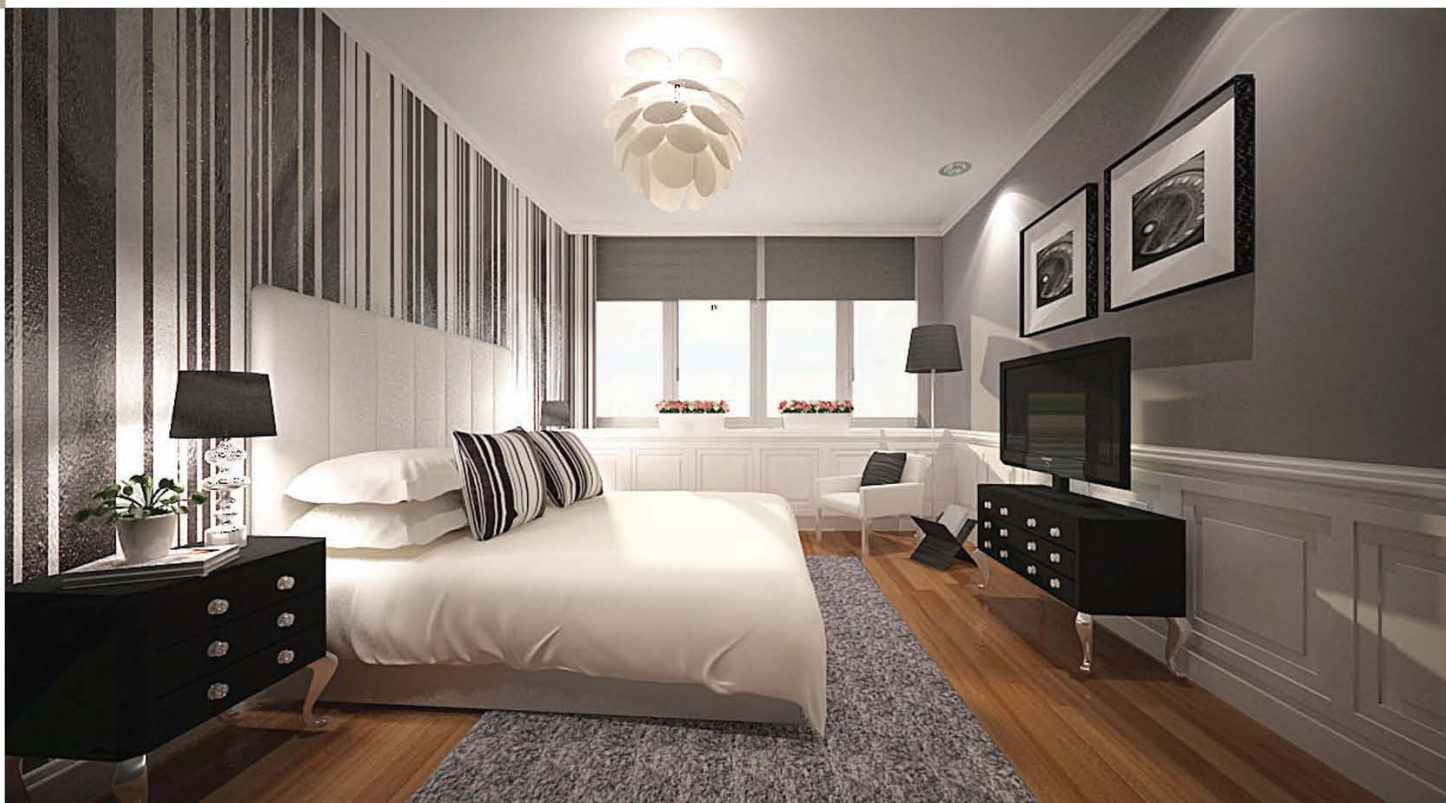
Most often, friendship are kindled, truces are made and battles are won from the simplest creations, lovingly crafted from the kitchen.











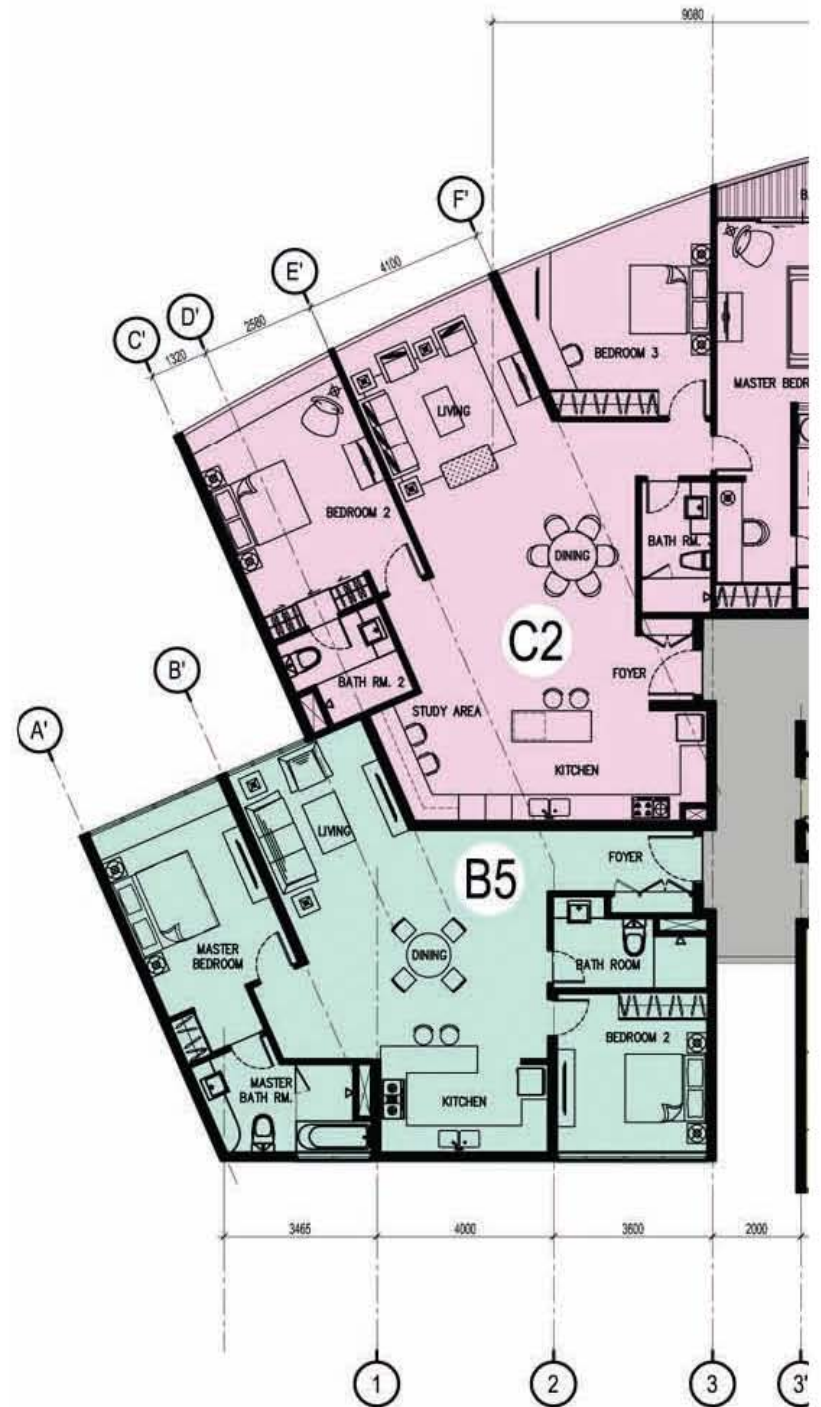
PINETREE

MARINA RESORT

SCALE : 1 : 200

4th - 23rd Storey

	TYPE B - 1 BEDROOM
	TYPE C - 2 BEDROOMS
	TYPE D - 3 BEDROOMS
	CORRIDOR
	LIFT & EXIT STAIRCASE



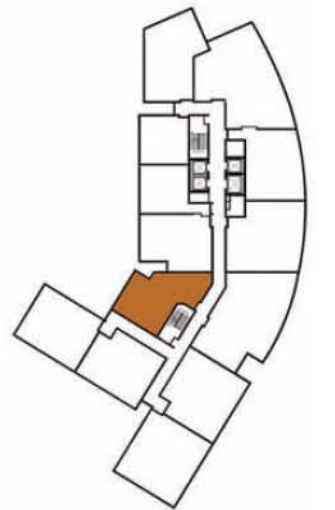




PINETREE

MARINA RESORT

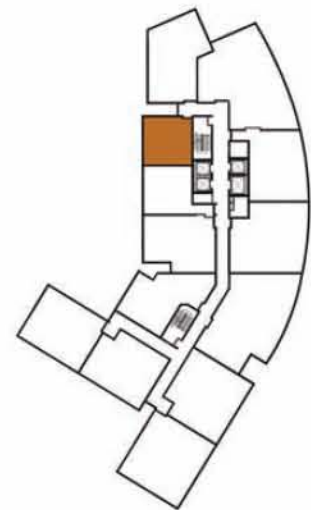
SCALE : 1 : 75
 TYPE A1: 1 BEDROOM
 AREA: 62.59 sq.m/
 673.71 sq.ft
 No. Units: 20



PINETREE

MARINA RESORT

SCALE : 1 : 75
 TYPE A2: 2 BEDROOMS
 AREA: 88.75 sq.m /
 955.29 sq.ft
 No. Units: 20



PINETREE

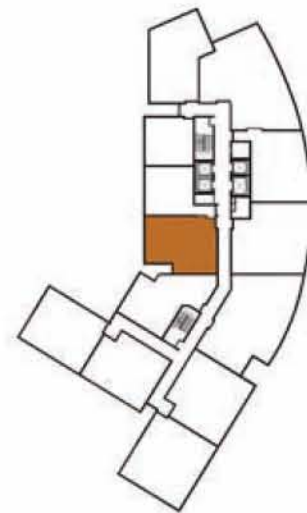
MARINA RESORT

SCALE : 1 : 75

TYPE A3 : 1 BEDROOM

AREA: 56.21 sq.m /
605.03 sq.ft

No. Units: 20



PINETREE

MARINA RESORT

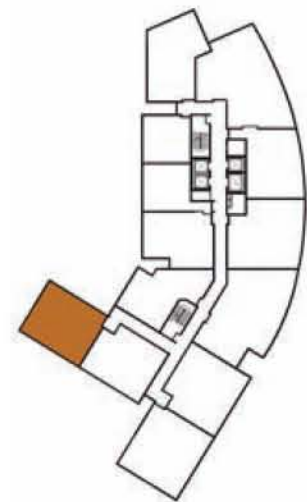
SCALE : 1 : 75

TYPE B1: 2 BEDROOMS

AREA: 89.40 sq.m /

962.29 sq.ft

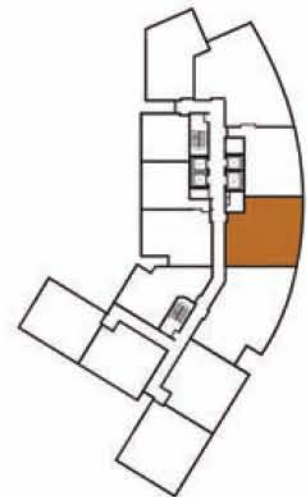
No. Units: 20



PINETREE

MARINA RESORT

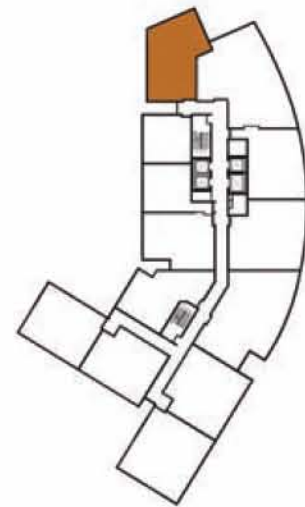
SCALE : 1 : 75
 TYPE B3: 2 BEDROOMS
 AREA: 97.75 sq.m /
 1052.17 sq.ft
 No. Units: 20



PINETREE

MARINA RESORT

SCALE : 1 : 75
 TYPE B4 : 2 BEDROOMS +
 STUDY AREA
 AREA: 120.58 sq.m /
 1297.91 sq.ft
 No. Units: 20



PINETREE

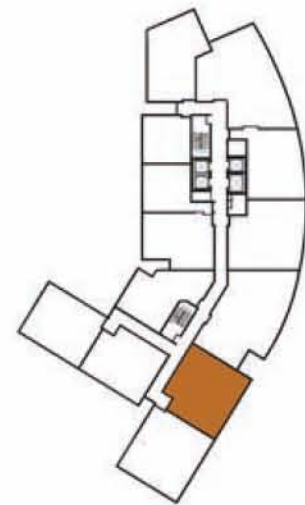
MARINA RESORT

SCALE : 1 : 75

TYPE B5 : 2 BEDROOMS

AREA: 103.52 sq.m /
1114.28 sq.ft

No. Units: 20



PINETREE

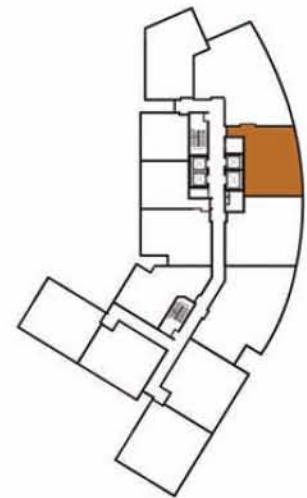
MARINA RESORT

SCALE : 1 : 75

TYPE B6 : 2 BEDROOMS

AREA: 112.31 sq.m /
1208.89 sq.ft

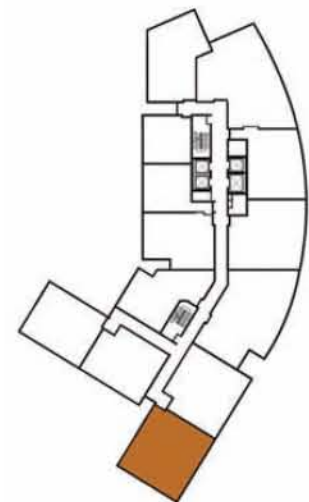
No. Units: 20



PINETREE

MARINA RESORT

SCALE : 1 : 75
 TYPE B7: 2 BEDROOMS
 AREA: 99.13 sq.m /
 1067.02 sq.ft
 No. Units: 20



PINETREE

MARINA RESORT

SCALE : 1 : 75

TYPE B8: 2 BEDROOMS +
STUDY AREA

AREA: 120.90 sq.m /
1301.35 sq.ft

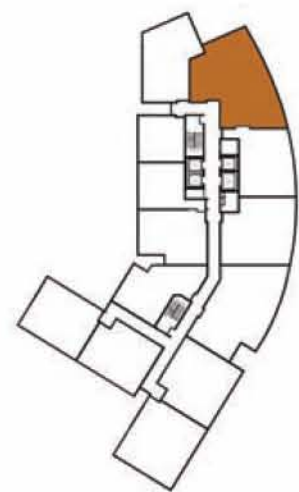
No. Units: 20



PINETREE

MARINA RESORT

SCALE : 1 : 75
 TYPE C1 : 3 BEDROOMS
 AREA: 155.74 sq.m /
 1676.37 sq.ft
 No. Units: 20



PINETREE

MARINA RESORT

SCALE : 1 : 75
 TYPE C2: 3 BEDROOMS
 + STUDY AREA
 AREA: 164.16 sq.m /
 1767.00 sq.ft
 No. Units: 20



1°25'N 103°39.5'E

A VIEW. A LANDMARK. A DESTINATION.



Nestled amongst lush vegetation and enveloped in pristine waters, lies a paradise on earth.

Sheltered along the coast of the Puteri Harbour Development, Pinetree Marina Resort is nestled within the highly sought after Iskandar enclave.

These homes feature full waterfront views, arousing one's senses beyond imagination. The site is accessed from the North-west through Laksamana Avenue, linking to a scenic boulevard located along the waterfront and will be greeted by a dramatically landscaped intersection to the West. Residence may alternatively choose to access from an exclusive private road from the South-West.

1°25'N
103°39.5'E



BASK IN NATURE EVERYDAY

Nature and Humanity converge as One.



The signature harbour front completes the design concept with a nautical theme.

Watch the day go by with the spectacular view of the bay with yachts and boats dotting the ocean or ride the waves in your own yacht or boat with the stunning towers as your backdrop. When evening comes, enjoy the azure waters lapping on the harbour rocks, creating the perfect sunset stroll to wind down the day with your loved ones.

Dance under the starry night with the sound of waves as your music or enjoy that quiet moment with that special someone while soaking your feet in the water.

Run with the ocean breeze as your companion or ride to your heart's content.



A close-up photograph of a green leaf with numerous water droplets, serving as a background for the text 'HOME'. The leaf's veins are visible, and the droplets are of various sizes, some in sharp focus and others blurred. The overall color palette is a range of greens, from dark forest green to a lighter, almost white, bright green where the light reflects off the droplets and the leaf's surface.

HOME



A SANCTUARY OF VIRTUE

It is a sanctuary into which men flee from
the world's perils and alarm



BUILDING A FUTURE

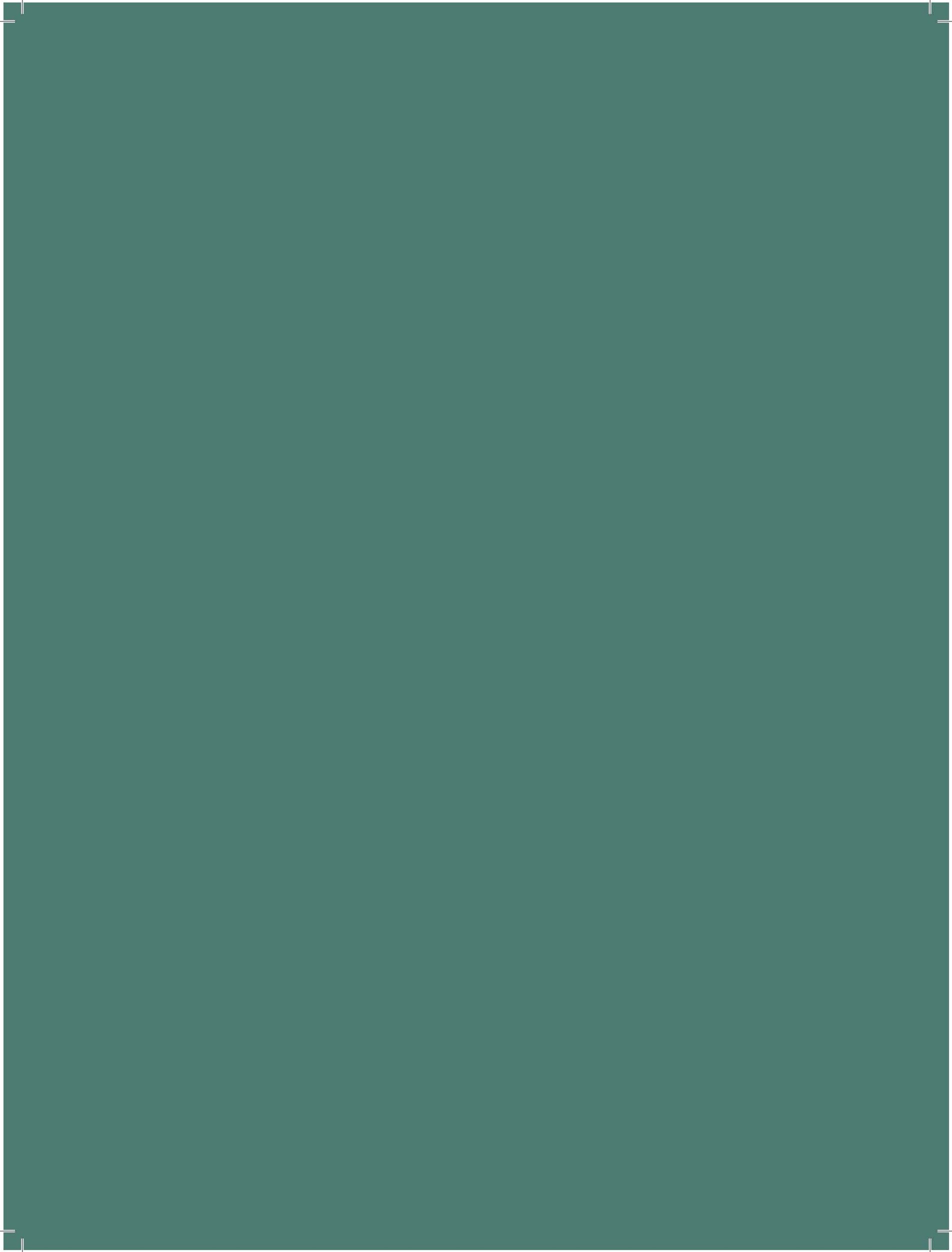
The future is something which manifests nowhere more
potently than in our cities.

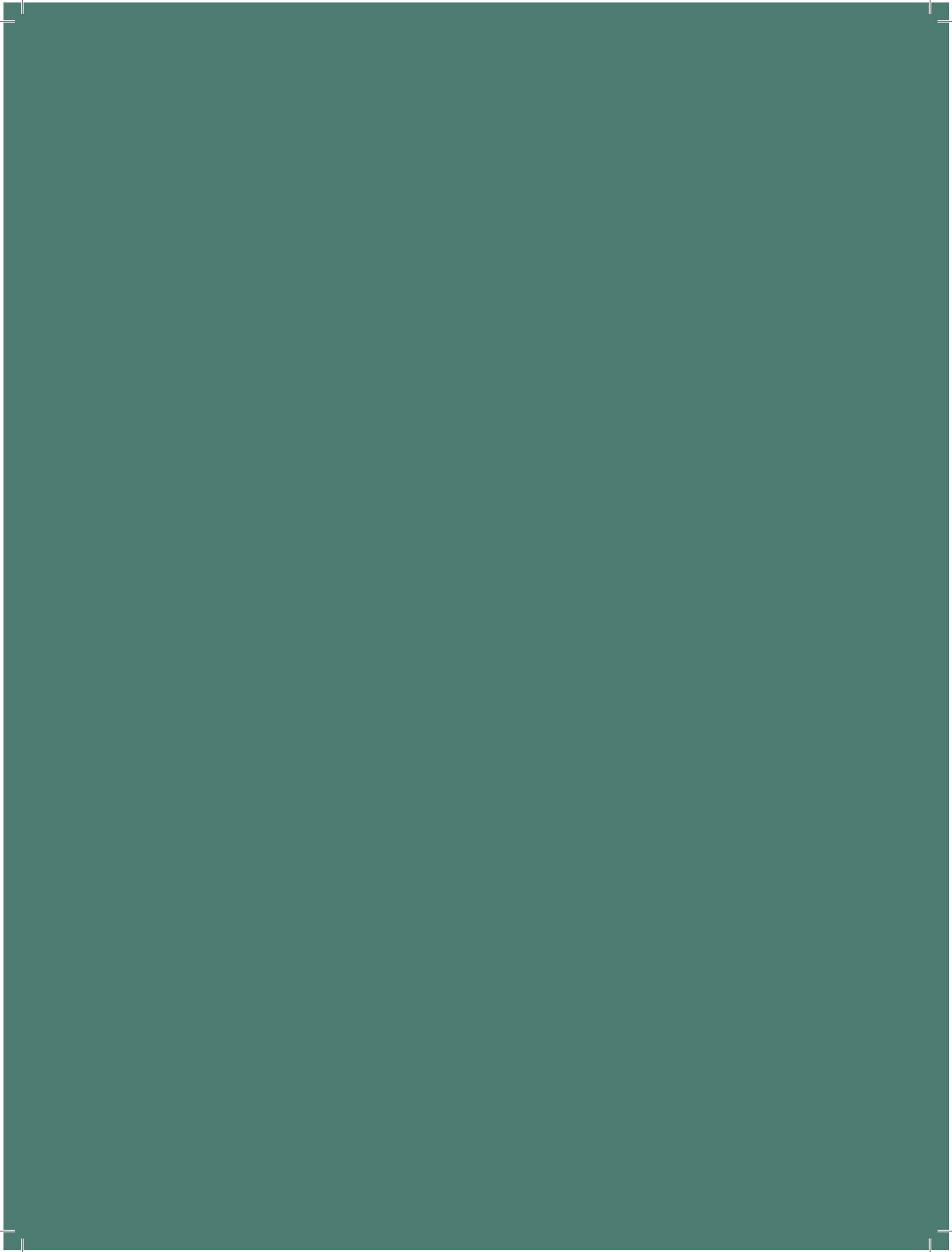


At Pinetree Marina Resort, we aim to plant a seed and grow communities that share a vision of balanced conservation and quality living, where nature blends harmoniously with luxurious lifestyles, and a city is waiting to grow with its community in mind. Here, we will create the essential elements to built and nurture generations to come, a generation of society where higher civic consciousness comes naturally. Henceforth we believe that making this decision is a worthwhile choice.

The community will benefit naturally from the seamless synergy of infrastructures within close proximity such as the Government Precinct, The Marina Clubhouse, the Ferry Terminal, the CIQ, Convention Centre, International Schools, Prestigious Universities, fine dining restaurants and fashion and lifestyle boutiques, all within minutes away.

The timeless appeal of waterfront living completes the picture of perfect, balanced and harmonious living, and is now available as a once in a lifetime choice, at Pinetree Marina Resort.





A
PROJECT
BY
TIONG
NAM

PINETREE
MARINA RESORT